

**CGEWHO – CHENNAI PHASE-III  
PROJECT**



**MONTHLY PROGRESS REPORT**

**STATUS AS ON : 31.01.2025**

**PROGRESS REPORT**  
**CGEWHO – CHENNAI PHASE-III PROJECT**

31.01.2025

STATUS AS ON 31 <sup>st</sup> JANUARY-2025	
All works completed in Blocks A1, A2, B1, C1, C2, C3, D1, D2 & D3 except	
WORKS TO BE DONE AFTER OBTAINING COMPLETION CERTIFICATE	WORKS TO BE DONE AT THE TIME OF HANDING OVER
<ul style="list-style-type: none"> <li>▪ Lift Commissioning works.               <ul style="list-style-type: none"> <li>a) Block D2 – All Lifts Slow Speed completed.</li> <li>b) Community Hall – 1 Lift High Speed &amp; 1 Lift Slow Speed completed.</li> <li>c) All Other Lifts after obtaining Permanent Power Supply</li> </ul> </li> <li>▪ Fixing of EB meters.</li> </ul>	<ul style="list-style-type: none"> <li>▪ Fixing of Plumbing CP fittings.</li> <li>▪ Internal Painting 2<sup>nd</sup> Coating</li> <li>▪ Fixing of Electrical fittings in common areas.</li> </ul>
STATUS OF WORKS IN PROGRESS IN B2 BLOCK	
<ul style="list-style-type: none"> <li>▪ 2<sup>nd</sup> Coat Wall Putty 70% completed (85 / 120).</li> <li>▪ External Plastering 96% completed.</li> <li>▪ Fixing of Bathroom Wall Tiles 96% completed (230/ 240).</li> <li>▪ Laying Of Floor Tiles               <ul style="list-style-type: none"> <li>a) Ceramic Tiles in Bathroom 96% completed (230 / 240).</li> <li>b) Vitrified Tiles in Halls &amp; Bedrooms 94% completed (113/120)</li> </ul> </li> <li>▪ Fixing of UPVC Windows 80% completed. (382/480).</li> <li>▪ Fixing of UPVC French Doors 74% completed (178/240).</li> <li>▪ Fixing of Flush door shutters 96% completed ( 805 / 840 )</li> <li>▪ Fixing of Door Hardware fittings 50% completed.</li> <li>▪ Fixing of IWC 95% completed (115/120)</li> <li>▪ Kitchen Finishing Works               <ul style="list-style-type: none"> <li>a) Laying of Granite Countertop 100% completed (120 / 120).</li> <li>b) Fixing of Kitchen wall Dados 93% completed (112/120).</li> <li>c) Fixing of S.S Sink 100% completed (120/120)</li> </ul> </li> <li>▪ Firefighting works 70% completed.</li> <li>▪ Bathroom false ceiling work 85% completed (205/240).</li> <li>▪ Lift Installation works (Lift Materials received - 3 out of 3 ).               <ul style="list-style-type: none"> <li>a) Lift 1 – Scaffolding work completed. Frame fixing started.</li> </ul> </li> <li>▪ Stilt Grano flooring 85% completed.</li> <li>▪ Overhead Tank -Ring main work 95% completed.</li> <li>▪ Laying of Staircase Green marble.</li> <li>▪ Internal Electrification works               <ul style="list-style-type: none"> <li>a) Electrical wire pulling work 16% completed (20/120).</li> </ul> </li> <li>Fixing of Modular Switches &amp; Sockets 16% completed (20/120).</li> </ul>	



**PROGRESS REPORT**  
**CGEWHO – CHENNAI PHASE-III PROJECT**

---

**STATUS OF EXTERNAL DEVELOPMENT WORKS**

- **Underground Sump-1 (Near B-Block)**
  - Fixing & installation of Pumps completed.
  - WTP Materials received. Installation of WTP 90% completed.
- **Underground Sump-2 (Near D-Block)**
  - Fixing & installation of Pumps completed.
  - Testing of Pump-1 completed.
  - WTP Materials received. Installation of WTP 95% completed.
- **Sewage Treatment Plant-2 (Near D-Block)**
  - Installation of STP 90% completed.
- **Sewage Treatment Plant-1 (Near C3-Block)**
  - STP components received. Installation of STP 85% completed.
- **Laying of External Sewer lines**
  - Works completed in all blocks.
- **Laying of External Water Supply lines**
  - Works completed in all blocks except in B2 Block.
  - B2 Block - 75% completed.
- **Laying of Storm Water Drainage.**
  - Works completed in all blocks except in B2 Block & collection chamber work.
  - B2 Block – 65% completed.
- **External Electrification works.**
  - All Works completed except fixing of 2 Transformers for C1-Block & A2- Block.
  - Erection of Diesel Generators completed.
- **Laying of Roads.**
  - **Laying of Granular Sub Base (GSB) – 1<sup>st</sup> Layer.**
    - a) Work completed in all blocks except in front side (South side) of B1 & B2 Blocks
  - **Laying of Wet Mix Macadam (WMM) -2<sup>nd</sup> Layer.**
    - a) Work completed in all blocks except around B1 & B2 blocks & in front side (South side) of B1 & B2 Blocks.



# **PROGRESS REPORT** **CGEWHO – CHENNAI PHASE-III PROJECT**

---

31.01.2025

**PHOTOGRAPHS OF WORK PROGRESS AS ON 31<sup>st</sup> JANUARY 2025**



**Community Hall**



**Block A1 – Front (South Side) Elevation**

# **PROGRESS REPORT** **CGEWHO – CHENNAI PHASE-III PROJECT**

---



**Block A2 – South side Elevation & Road work**



**Road between A1 & A2 Block**

# PROGRESS REPORT CGEWHO – CHENNAI PHASE-III PROJECT

---



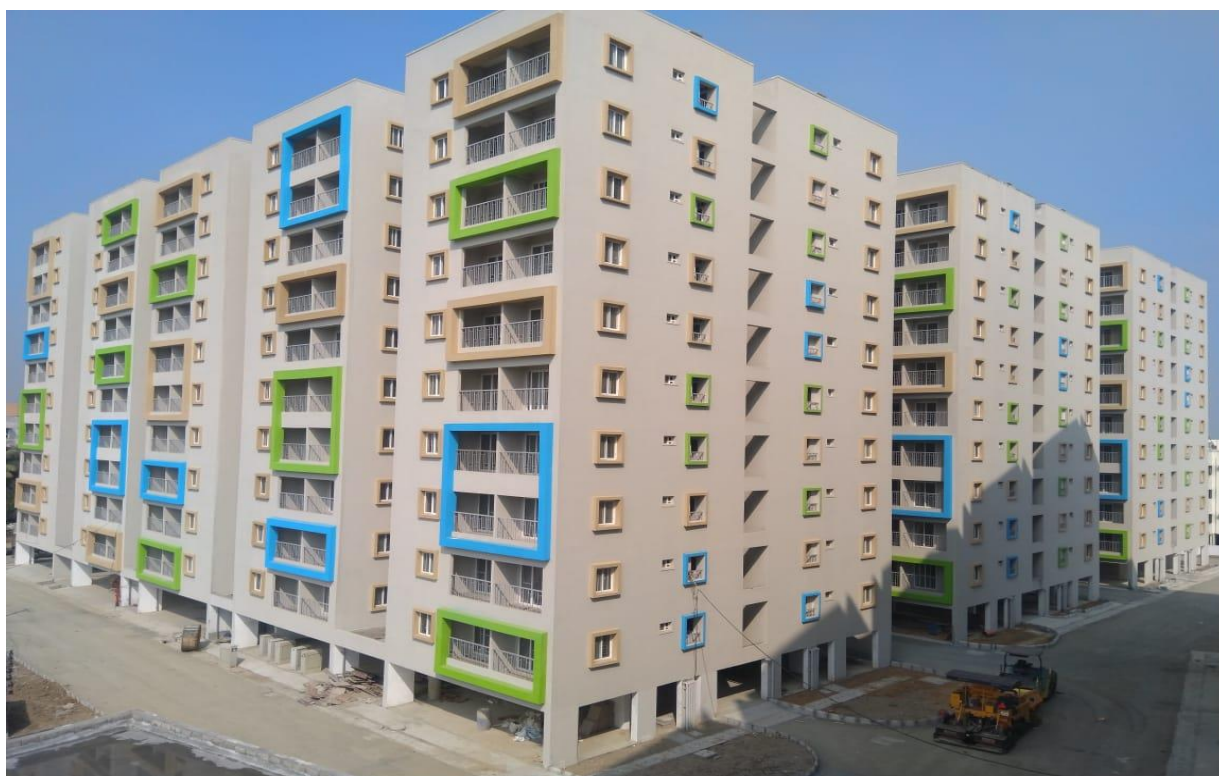
**Block B1 & B2 – Front (South side) Elevation**



**Block B2 – East side Elevation**

# **PROGRESS REPORT** **CGEWHO – CHENNAI PHASE-III PROJECT**

---



**Block C1,C2 & C3 South Side Elevation**



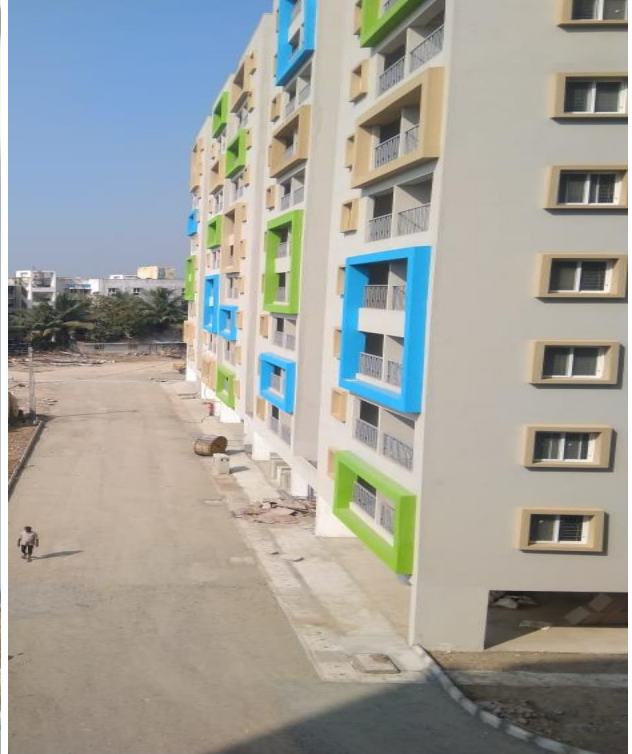
**View of C1,C2 ,C3 West Side & A1 Block North Side Elevation**

# **PROGRESS REPORT** **CGEWHO – CHENNAI PHASE-III PROJECT**

---



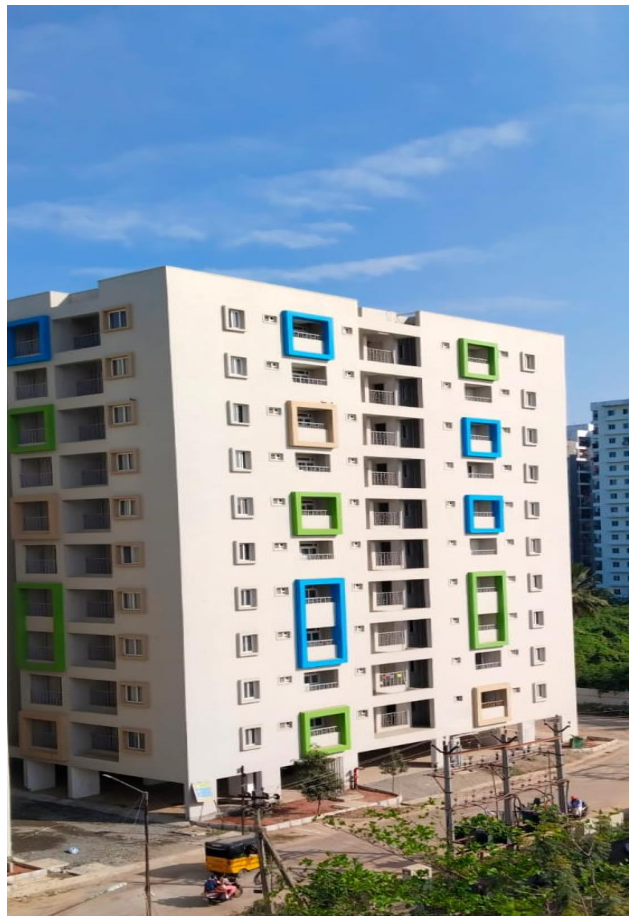
**Road between C1 & C2**



**Road in front of C3 Block**



**Block – D1**



**Block – D2**



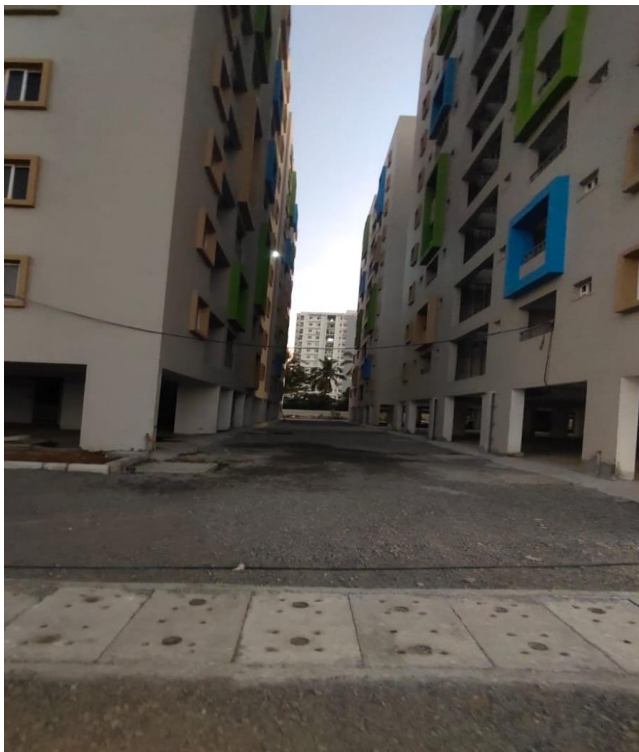


# PROGRESS REPORT CGEWHO – CHENNAI PHASE-III PROJECT

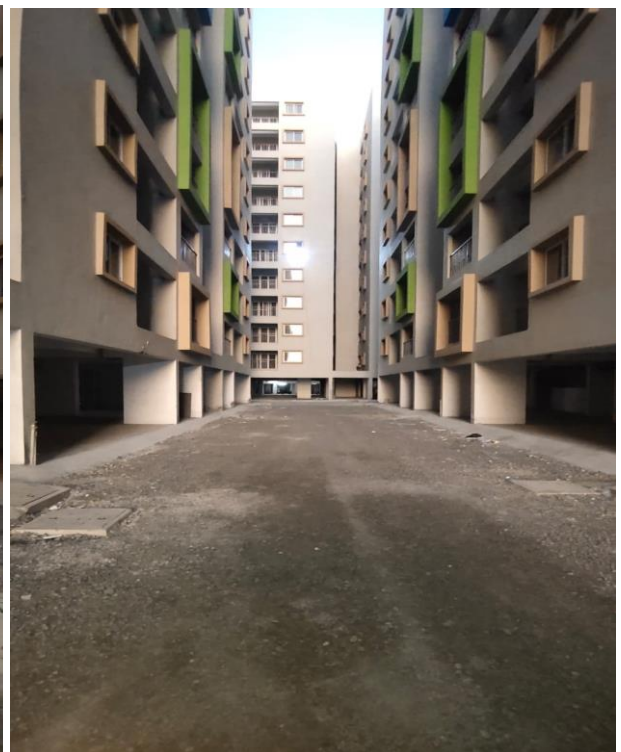
---



**D3 Block North Side Elevation**



**Road between D3 & D1**



**Road between D1 & D2**

# **PROGRESS REPORT** **CGEWHO – CHENNAI PHASE-III PROJECT**

---



**Sewage Treatment Plant 1 (Near C Block). Installation process of STP 85% completed.**



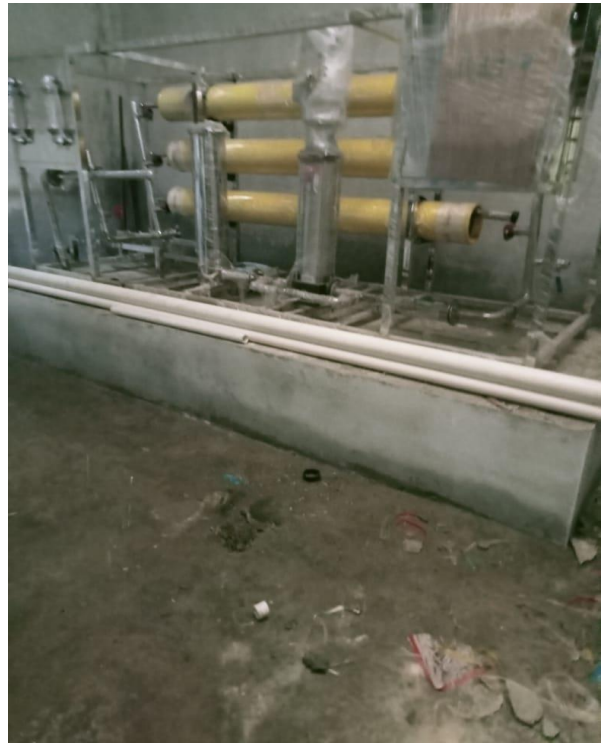
**Sewage Treatment Plant 2 (Near D1 Block). Installation of STP 100% completed.**

# PROGRESS REPORT

## CGEWHO – CHENNAI PHASE-III PROJECT

---

**Under Ground Sump 1 ( Opp to B1 Block).** Installation of Pumps completed. Installation of WTP completed. Connection of Pipes & Testing on progress.



**Under Ground Sump 2 (Near D1 Block).** Installation of Pumps & installation of WTP completed. Testing of Pumps on progress.

